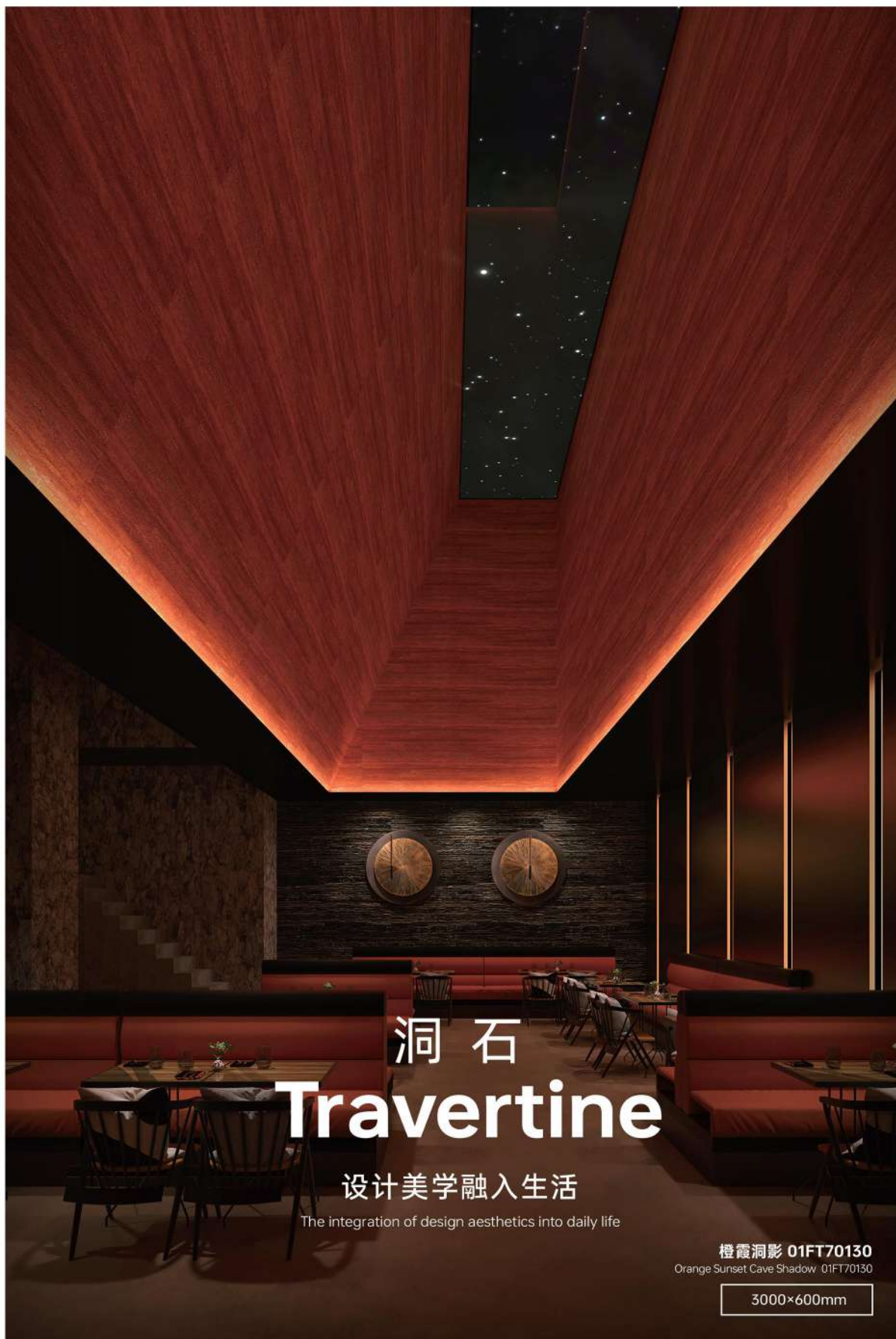


「还原潘通真彩美学软瓷」

RESTORE THE AESTHETIC SOFT PORCELAIN OF
PANTONE TRUE COLOR

H3



洞石

Travertine

设计美学融入生活

The integration of design aesthetics into daily life

橙霞洞影 01FT70130

Orange Sunset Cave Shadow 01FT70130

3000×600mm

使用型号：橙霞洞影 01FT70130、墨棕叠澜 01WF501538、岩灰格韵 DLS1011

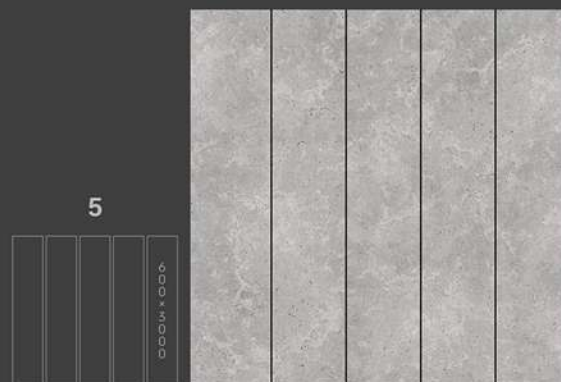
Model Number: Orange Sunset Cave Shadow 01FT70130, Ink Brown Stacked Ripples 01WF501538, Lime Ash Grid Melody DLS1011



雨迹石语 DS1018
Rain Traces Stone Whispers DS1018

1200×600mm

- 常备规格 Regular Size
1200×600mm / 2400×600mm / 3000×600mm
- Not Limited The Following Colors
不限于以下颜色



灰白河迹 01WT601542 (连纹)
Ashen River Traces 01WT601542
(Continuous Pattern)



山河隐洞 01WT601543 (连纹)
Hidden River and Mountain Caves 01WT601543
(Continuous Pattern)

■ 常备规格 Regular Size

1200×600mm / 2400×600mm / 3000×600mm

■ Not Limited The Following Colors

不限于以下颜色



橙霞洞影 01FT70130

Orange Sunset Cave Shadow 01FT70130

■ 设计师说 Design Concept

日落时分的天空，红偏金黄的色彩铺满天空，云层透出不同层次的光影，创造出一种温暖而宁静的氛围。

At sunset, the sky is filled with hues of red leaning towards golden yellow, with clouds revealing various levels of light and shadow, creating a warm and tranquil atmosphere.



红韵石脉 DS1019

Crimson Vein Stone DS1019



赤霞洞石 01FT70132

crimson cloud Travertine 01FT70132



粉韵天痕 01FT701512

Crimson Charm Celestial Traces 01FT701512



红土云境 DS1004

Crimson Clay Cloud Realm DS1004



橙纹石语 01WT701298

Orange Vein Stone Whisper 01WT701298

■ 常备规格 Regular Size

1200×600mm / 2400×600mm / 3000×600mm

■ Not Limited The Following Colors

不限于以下颜色



灰岩夜幕 01WT501286

Lime Rock Dusk 01WT501286



灰洞天幕 01WT501296

Grey cave sky curtain 01WT501296



灰洞纹理 DS1013

Grey Cave Texture DS1013



雨迹石语 DS1018

Rain Traces Stone Whispers DS1018



青春木影 DS1021

Youthful Wood Shadow DS1021



洞石原韵 01FT601511

Travertine Original charm 01FT601511

■ 常备规格 Regular Size

1200×600mm / 2400×600mm / 3000×600mm

■ Not Limited The Following Colors

不限于以下颜色



石素米白 DS3008Z

Stone Simple Off-White DS3008Z



原素石纹 DS1001-1

Elemental stone Pattern DS1001-1



洞石流纹 DS1001

Travertine Flow Patterns DS1001



沙域古痕 01WT601521

Sandy Realm Ancient Traces 01WT601521



黄土焰影 DS3003Z

Terra Cotta Flame Shadow DS3003Z



水迹石语 01WT601295

Water Mark Stone Whisper 01WT601295

■ 常备规格 Regular Size

1200×600mm / 2400×600mm / 3000×600mm

■ Not Limited The Following Colors

不限于以下颜色



深土流纹 DS1002

Deep Earth Flow Patterns DS1002



灰岩云影 DS1005

Lime Gray Cloud Shadow DS1005



山川石影 01WT601563

Mountain River Stone Shadow 01WT601563



古木洞石 01WT601561

Ancient Wood Travertine 01WT601561



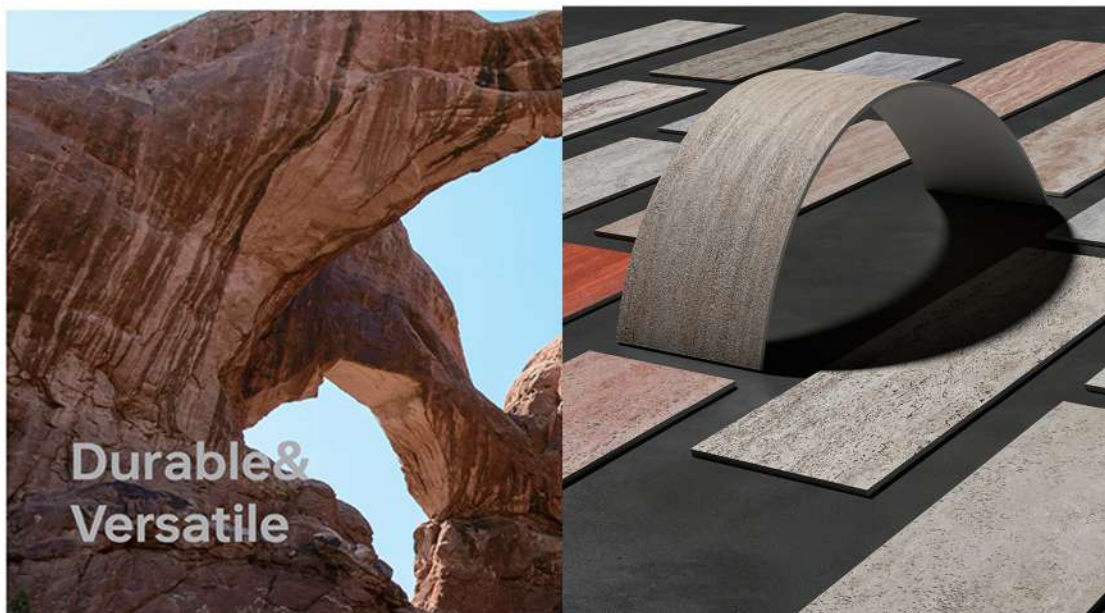
棕土木韵 DS1022

Umber Earthwood Melody DS1022



棕土云纹 DS1003-1

Umber Earth Cloud Veins DS1003-1



- 常备规格 Regular Size
1200×600mm
- Not Limited The Following Colors
不限于以下颜色



石墨流年 01WT601545
Graphite Years 01WT601545



静河石语 01WT601293
Silent River Stone Tale 01WT601293

■ 产品信息 Products Information

常备规格 Regular Size (mm)	产品厚度 Product Thickness (mm)	纸箱规格 Carton Specifications (mm)	片数/箱 Pieces/Carton (pieces)	平方数/箱 Square Meters/Carton (m ²)	重量/箱 Weight/Carton (kg)	木托规格 Pallet Size (mm)	木箱/托 Crates/Pallet (crts.)	片数/箱 Pieces/Pallet (pieces)	平米/托 Square Meters/Pallet (m ²)	重量/托 Weight/pallet (kg)
1200×300	3.24	1210×610×450	16	11.52	54.4	1250×650×1020	13	/	149.76	712.2
2400×600	3.7	/	/	/	/	2450×710×510	/	100	144	700
3000×600	3.06	/	/	/	/	3070×710×510	/	100	180	800

■ 应用提示 Using Tips

柔性石材厚薄不均匀，宜采用配套的粘剂粘贴
密缝铺贴，宜采用配套的填缝剂填缝
建议横向铺贴

The flexible stone has uneven thickness, it is advisable to use a matching adhesive for sticking, and for close-seamed paving, it is advisable to use a matching grout for grouting, and it is recommended to pave horizontally.

The background of the entire page is a light-colored, marbled texture that resembles natural stone or ceramic slabs, with various shades of beige, cream, and light brown. The texture is irregular and organic, with veins and mottled patches.

2. PART

陶板系列

CERAMIC SLAB SERIES

陶板轻盈地附着在建筑的外衣上
无论是新建的高楼大厦
还是历经沧桑的旧城改造
都能完美融入
展现出一种别样的风情
它们的存在，不仅仅是为了装饰
更是为了与建筑本身和谐共生
共同抵御岁月的侵蚀

Ceramic slates, with their feather-light touch, find their place on the canvas of architecture, whether it be the fresh lines of new builds or the textured tales of old city revitalization. They are not just a layer of allure but a harmonious extension of the building's essence, designed to synergize with its very foundation against the test of time.

CERAMIC SLAB SERIES

纯粹质感 重塑空间美学

Pure texture, reshaping the aesthetics of space.

灰穹星痕 16WG616546
Grey Dome Star Tracks 16WG616546

3000*600mm

CERAMIC SLAB SERIES

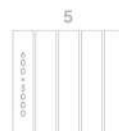
以自然之材
绘生活之韵

Using natural materials to
capture the rhythm of life.

灰墨星尘 16WG616542
Ashen Ink Stardust 16WG616542

3000*600mm

- 常规规格 Regular Size
1200*600mm / 2400*600mm / 3000*600mm
- Not Limited The Following Colors
不限于以下颜色



灰穹星痕 16WG616546 (连续)
Grey Dome Star Tracks 16WG616546
(Continuous Pattern)



灰墨星尘 16WG616542 (连续)
Ashen Ink Stardust 16WG616542
(Continuous Pattern)

• 设计师说 Design Concept

深灰色的基调与繁星和裂纹图案相符合，
创造出一种深邃而神秘的视觉效果。

The light grey base tone combined with patterns of
stars and cracks creates a profound and mysterious
visual effect.



白沙墨舞 AG901216 (连续)
White Shee Ink Dance AG901216(Continuous Pattern)



黑白海岸 01FG501516 (连续)
Black and White Coast 01FG501516(Continuous Pattern)

■ 常备规格 Regular Size

1200×600mm / 2400×600mm / 3000×600mm

■ Not Limited The Following Colors

不限于以下颜色



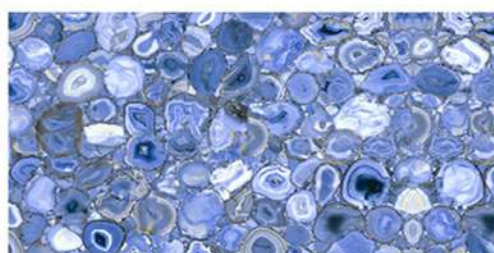
黄玉流纹 16WG616295
Topaz Flowing Veins 16WG616295



流沙陶韵 16WG616543
Flowing Sand Pottery Melody 16WG616543



漠行印记 16WG616521
Desert Tracks Mark 16WG616521



蓝晶石韵 AG201220
Azure Crystal Melody AG201220



黑曜石华 AG501222
Obsidian Elegance AG501222



战墨流金 AG901217
Battle Ink Flowing Gold AG901217



水墨陶澜 16WG616545
Inkstone Pottery Ripples 16WG616545

■ 产品信息 Products Information

常备规格 Regular Size (mm)	产品厚度 Product Thickness (mm)	纸箱规格 Carton Specifications (mm)	片数/箱 Pieces/Carton (pieces)	平方数/箱 Square Meters/Carton (m ²)	重量/箱 Weight/Carton (kg)	木托规格 Pallet Size (mm)	木箱/托 Crates/Pallet (crt.s.)	片数/箱 Pieces/Pallet (pieces)	平米/托 Square Meters/Pallet (m ²)	重量/托 Weight/pallet (kg)
1200×300	3.24	1210×610×450	16	11.52	54.4	1250×650×1020	13	/	149.76	712.2
2400×600	3.7	/	/	/	/	2450×710×510	/	100	144	700
3000×600	3.06	/	/	/	/	3070×710×510	/	100	180	810

■ 应用提示 Using Tips

柔性石材厚薄不均匀，宜采用配套的粘贴剂粘贴
密缝铺贴，宜采用配套的填缝剂填缝
建议横向铺贴

The flexible stone has uneven thickness, it is advisable to use a matching adhesive for sticking, and for close-seamed paving, it is advisable to use a matching grout for grouting, and it is recommended to pave horizontally.

3. PART

板岩系列

SLATE SERIES

板岩，这大自然馈赠的石材
以其独特的纹理和沉稳的色泽
自古以来便被赋予了诗意与浪漫
那些或深或浅的纹理，像是大自然随手挥洒的墨迹
又像是岁月的笔触，勾勒出一幅幅生动的画面
它，是岁月的见证者
承载着山川的厚重与历史的沉淀

A testament to the ages, slate, with its distinctive patterns and steadfast colors, has been the muse of poets through the centuries. The interplay of light and shadow within its lines is like the artful splatter of an artist's ink, or the deliberate strokes of time, painting life into the canvas of history. It carries the heft of landscapes and the depth of historical tales.

SLATE SERIES

自然美复刻于墙面之上

The beauty of nature is replicated on the walls



S L A T E S E R I E S

岩板规格 DLS1011

Lime Ash-Grat Metaboly DLS1011

1200*600mm

以自然之态 构筑您的生活艺术空间

Embrace the essence of nature
to build your artistic living space



SLATE SERIES

• 常规规格 Regular Size
1200*600mm

• Not Limited The Following Colors
不限于以下颜色



岩板规格 DLS1011

Lime Ash-Grat Metaboly DLS1011

• 设计阐述 Design Concept

自然界的岩石和矿物灰色和褐色相结合，让人联想到未经雕琢的自然之美，现代设计中的简约风格，不规则的石材纹理体现了设计的自由和创新。

The combination of grey and brown in natural rocks and minerals echoes the beauty of unpolished nature, like the minimalist style in modern design, with its irregular stone patterns, reflects the freedom and innovation of the design.



黄岩天裂 01WL601290

Sakura Rock Casual RH: 01WL601290



黄岩微光 01WL601299

Sakura Rock Glamor: 01WL601299



橙金石韵 DLS1004

Umbur Gold Stone Metaboly DLS1004



河脉棕圆 DLS1013

River Vein Brown Rippled DLS1013

■ 常备规格 Regular Size

1200×600mm

■ Not Limited The Following Colors

不限于以下颜色



沙流天灰 01WL201501

Sandy Flow Celestial Grey 01WL201501



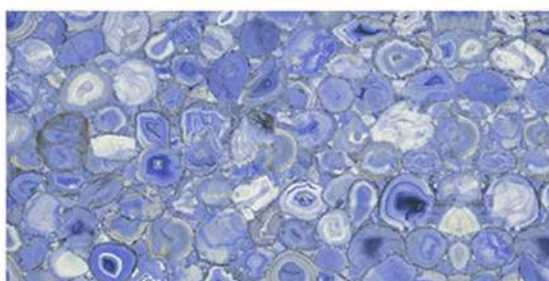
星河流棕 DLS1006

Starry River Brown Flow DLS1006



云陆森境 AL201219

Cloud Land Forest Realm AL201219



木影蓝晶 AL201220

Wood Shadow Blue Crystal AL201220

■ 产品信息 Products Information

常备规格 Regular Size (mm)	产品厚度 Product Thickness (mm)	纸箱规格 Carton Specifications (mm)	片数/箱 Pieces/Carton (pieces)	平方数/箱 Square Meters/Carton (m ²)	重量/箱 Weight/Carton (kg)	木托规格 Pallet Size (mm)	木箱/托 Crates/Pallet (crts.)	平米/托 Square Meters/Pallet (m ²)	重量/托 Weight/pallet (kg)
1200×600	3.6	1210×675×450	16	11.52	42.4	1250×650×1020	13	149.76	561.2

■ 应用提示 Using Tips

柔性石材厚薄不均匀，宜采用配套的粘贴剂粘贴
密缝铺贴，宜采用配套的填缝剂填缝
建议横向铺贴

The flexible stone has uneven thickness, it is advisable to use a matching adhesive for sticking, and for close-seamed paving, it is advisable to use a matching grout for grouting, and it is recommended to pave horizontally.



星月石系列

STARRY MOON STONE SERIES

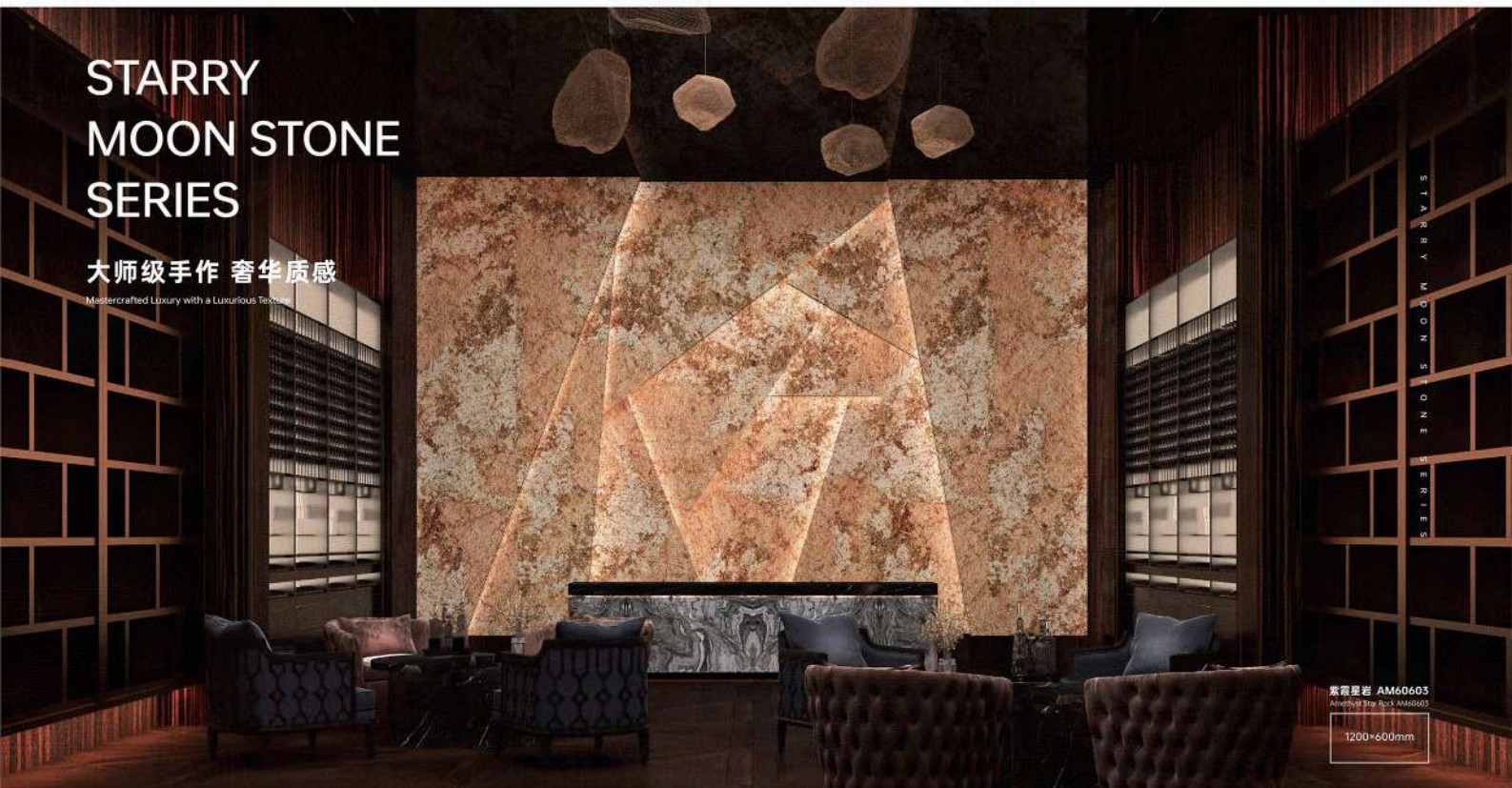
它仿佛是夜空中最璀璨的星辰
又如同一轮皎洁的明月
静静地悬挂在深邃的夜空之中
是大自然赋予我们的一份珍贵礼物
它以其独特的美感和神秘的气息
俘获了无数人的心

As if it were the most resplendent star in the night sky,
or a luminous moon hanging tranquilly in the abyss of
the cosmos, it is a precious gift bestowed by nature.
With its unique beauty and enigmatic aura, it has
captured the hearts of countless.

STARRY MOON STONE SERIES

大师级手作 奢华质感

Mastercrafted Luxury with a Luxurious Texture



紫霞星岩 AM60603

Amethyst Star Rock AM60603

1200*600mm

STARRY MOON STONE SERIES



时空锈语 XD1002

Chrono-Spatial Rustic Pattern XD1002

1200*600mm

STARRY
MOON STONE
SERIES

• 常规规格 Regular Size
1200*600mm

• Not Limited The Following Colors
不限于以下颜色



15



紫霞星岩 AM60603 (连续)

Amethyst Star Rock AM60603 (Continuous Pattern)

• 设计灵感 Design Concept

山崖间开采出来的星月岩石，表面有序的平整感，以及红、白、紫三色晕染的自然美。

星月岩的自然纹理与色彩，象征着宇宙星月的神秘与浪漫。

The freely mined Star and Moon rocks from the mountains have an orderly rough surface and naturally beautiful patterns of red, white, and purple colors. The natural textures and colors of the Star and Moon rocks symbolize the mystery and romance of the universe's stars and moon.



15



秋野星踪 AM50606 (连续)

Autumn Wilderness Star Tracks AM50606 (Continuous Pattern)



时空锈语 XD1002

Chrono-Spatial Rustic Pattern XD1002



石琢棕影 XD1001

Rough Stone Braver Shallow XD1001

■ 常备规格 Regular Size
1200×600mm

■ Not Limited The Following Colors
不限于以下颜色



星月璞石 XD3001Z
Starry Moon Unhewn Stone XD3001Z

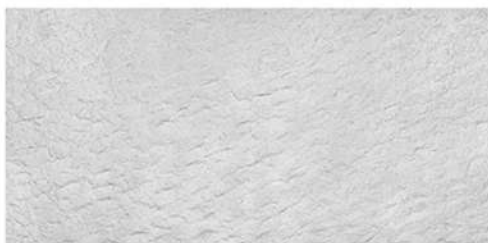


星月原石 XD3002Z
Starry Moon Raw Stone XD3002Z



星界墨岩 XD3004Z
Stellar Abyss Inkstone XD3004Z

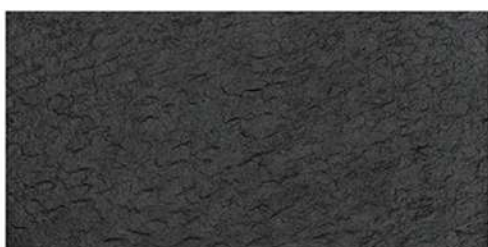
■ 常备规格 Regular Size
3000×1100mm



米白岁月 TXY3001Z(高凸款)
Beige Years TXY3001Z (high convex version)



朱红石澜 TXY3002Z(高凸款)
Vermilion Stone Ripples TXY3002Z (high convex version)



黑曜石脉 TXY3003Z(高凸款)
Obsidian Vein TXY3003Z (high convex version)

■ 产品信息 Products Information

常备规格 Regular Size (mm)	产品厚度 Product Thickness (mm)	纸箱规格 Carton Specifications (mm)	片数/箱 Pieces/Carton (pieces)	平方数/箱 Square Meters/Carton (m ²)	重量/箱 Weight/Carton (kg)	木托规格 Pallet Size (mm)	木箱/托 Crates/Pallet (crts.)	片数/箱 Pieces/Pallet (pieces)	平米/托 Square Meters/Pallet (m ²)	重量/托 Weight/pallet (kg)
1200×300	4.7	1210×675×450	10	7.2	35.5	1250×650×1020	13	/	93.6	461.5
3000×1100	5.2	/	/	/	/	3070×1210×510	/	50	165	814

■ 应用提示 Using Tips

柔性石材厚薄不均匀，宜采用配套的粘贴剂粘贴
密缝铺贴，宜采用配套的填缝剂填缝
建议横向铺贴

The flexible stone has uneven thickness. It is advisable to use a matching adhesive for sticking, and for close-seamed paving, it is advisable to use a matching grout for grouting, and it is recommended to pave horizontally.

A square graphic with a black border containing the text '5 PART'. The '5' is large and bold, with a period below it. 'PART' is in a smaller, uppercase font to the right of the '5'.

斧啄石系列

CHISELED STONE SERIES

斧啄石的纹理给人一种自然、质朴的感觉

常用于园林景观、墙面装饰等

斧啄石的使用，不仅能够提升景观的视觉效果

还能与周围的自然环境和谐地融为一体

创造出一种独特的氛围和风格

The texture of the chiseled stone evokes a sense of natural simplicity, often utilized in garden landscapes and wall decorations. Its application not only enhances visual appeal but also harmoniously blends with the surrounding environment, creating a unique ambiance and style.

CHISELED STONE SERIES

自然铺陈 典雅生活

Nature unfolds, elegant living



劲灰石格 FZ3002Z

Mix Gray Stone Grid FZ3002Z

1200*600mm

使用编号: 劲灰石格 FZ3002Z, 橡木木饰 DS1022
Model Number: Mix Gray Stone Grid FZ3002Z, Limber Earthwood Melody DS1022

CHISELED STONE SERIES



斧凿石间 诗意盎然
都是对自然之美的深情颂歌

Chiseled between stones, brimming with poetry
all are heartfelt odes to the beauty of nature

暗夜石格 FZ3003Z

Dark Night Stone Grid FZ3003Z

1200*600mm

• 常规规格 Regular Size
1200*600mm

• Not Limited The Following Colors
不限于以下颜色



暗夜石格 FZ3003Z

Dark Night Stone Grid FZ3003Z

• 设计师说 Design Concept

神秘文化和幻想艺术, 如古老的传说, 幻想故事中的元素, 以及宇宙星空的无限可能。

Enigmatic cultures and the art of fantasy, including elements from ancient tales, the realms of imaginative stories, and the boundless potential of the universe and its starry skies



- 常备规格 Regular Size
1200×600mm
- Not Limited The Following Colors
不限于以下颜色



奶灰石格 FZ3002Z
Milk Gray Stone Grid FZ3002Z



流水翠影 AA101221
Flowing Water Emerald Shade AA101221

▪ 产品信息 Products Information

常备规格 Regular Size (mm)	产品厚度 Product Thickness (mm)	纸箱规格 Carton Specifications (mm)	片数/箱 Pieces/Carton (pieces)	平方数/箱 Square Meters/Carton (m ²)	重量/箱 Weight/Carton (kg)	木托规格 Pallet Size (mm)	木箱/托 Crates/Pallet (crts.)	平米/托 Square Meters/Pallet (m ²)	重量/托 Weight/pallet (kg)
1200×600	4.7	1210×675×450	10	7.2	36	1250×650×1020	13	93.6	468

▪ 应用提示 Using Tips

柔性石材厚薄不均匀，宜采用配套的粘剂粘贴
密缝铺贴，宜采用配套的填缝剂填缝
建议横向铺贴

The flexible stone has uneven thickness, it is advisable to use a matching adhesive for sticking, and for close-seamed paving, it is advisable to use a matching grout for grouting, and it is recommended to pave horizontally.

6. PART

夯土板系列

RAMMED EARTH SLAB SERIES

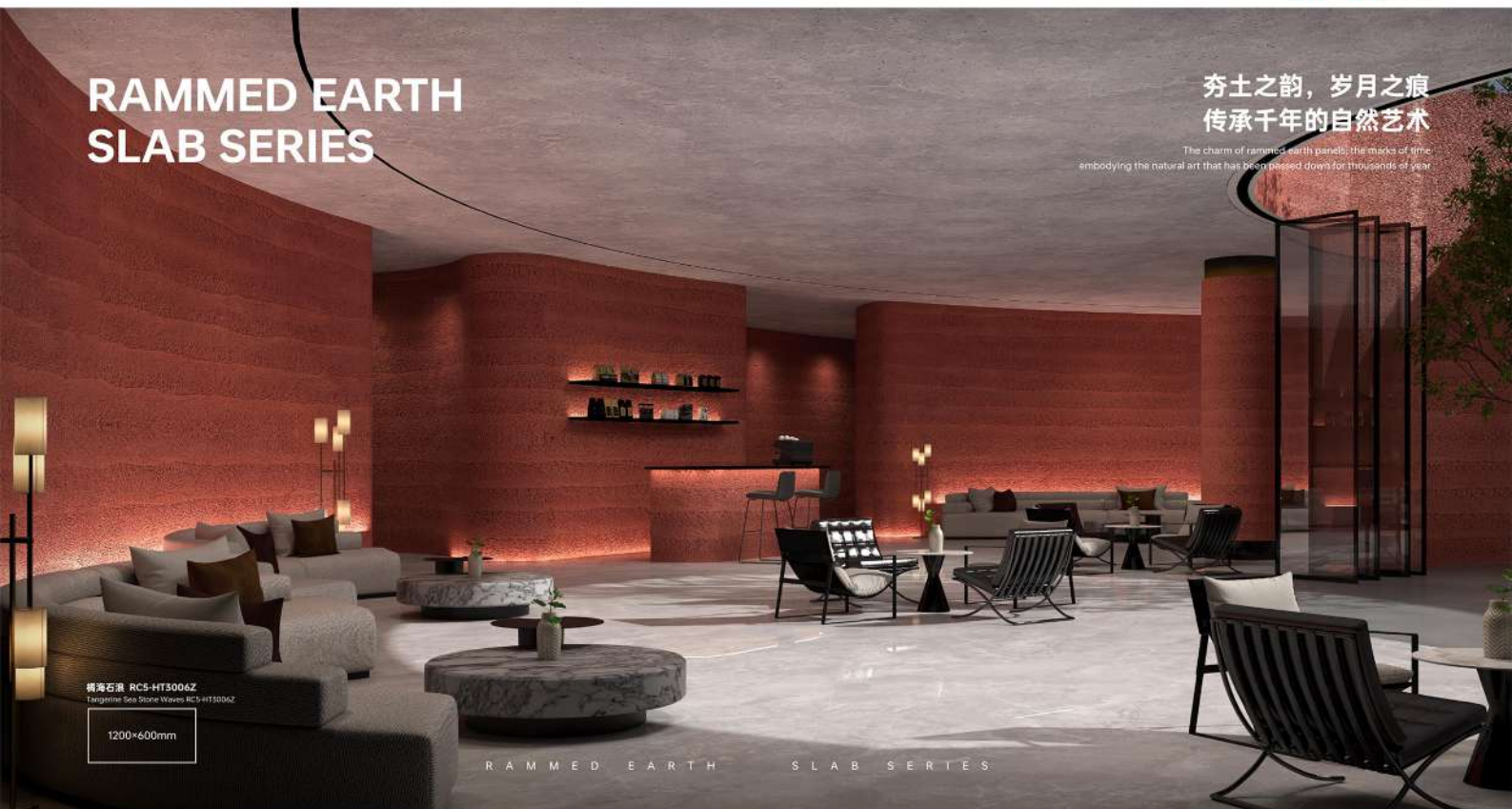
夯土板，就像是这片土地的守护者
它用自己坚实的身躯
记录着时间的流转和变迁
它的表面
粗糙而质朴，每一道纹理都诉说着一个故事
每一个颗粒都承载着一段记忆

Rammed Earth Slabs: Guardians of Time's Rustic Tales
As silent sentinels of the terrain, these slabs endure, marking the
passage of time. Their surfaces, textured and authentic, tell a story
in every line, with each speck a fragment of memory.

RAMMED EARTH SLAB SERIES

夯土之韵，岁月之痕
传承千年的自然艺术

The charm of rammed earth panels; the marks of time
embodying the natural art that has been passed down for thousands of year



桐海石浪 RC5-HT3006Z
Tangerine Sea Stone Waves RC5-HT3006Z

1200*600mm

R A M M E D E A R T H S L A B S E R I E S

使用型号: 桐海石浪 RC5-HT3006Z, 发那星金16W56654E
Model Number: Tangerine Sea Stone Waves RC5-HT3006Z, Anemone Staircase 16W56654E



RAMMED EARTH SLAB SERIES

新生 自然萌发
New life, emerging naturally

桐曲天成 01FN701517
Naturally graceful slabs: 01FN701517

1200*600mm

- 常规规格 Regular Size 1200*600mm / 2400*600mm
- Not Limited The Following Colors 不限于以下颜色



桐曲天成 01FN701517
Naturally graceful slabs: 01FN701517

• 设计精义 Design Concept

自然中色彩的渐变，如天空的晚霞或黎明时分的色彩变化，以及夯土的自然质朴感，色彩的层次渐变，模仿自然界中色彩的层次与流动，给人以温暖和舒适的感觉。

The gradation of colors in nature, such as the hues of an evening sky at dusk or the color changes at dawn, along with the natural and rustic feel of rammed earth. The vertical gradient of colors across the layers and flow of hues found in the natural world, providing a sense of warmth and comfort.



桐砂夯语 HT3001Z
Coral Sand Masonry Charm HT3001Z



灰砂夯语 HT3002Z
Grey Sand Masonry Charm HT3002Z



黄砂夯语 HT3003Z
Yellow Sand Masonry Speak HT3003Z

■ 常备规格 Regular Size
1200×600mm

■ Not Limited The Following Colors
不限于以下颜色



橘海石浪 RC5-HT3006Z
Tangerine Sea Stone Waves RC5-HT3006Z



紫澜叠影 RC5-HT3005Z
Violet Ripples Overlapping Shadows RC5-HT3005Z



静浪石语 RC5-HT3008Z
Serene Wave Stone Whisper RC5-HT3008Z



彩壤田园 01WN701590
Colorful Loam Pastoral 01WN701590



金沙海岸 RC5-HT3007Z
Golden Sand Coast RC5-HT3007Z



墨岩轨迹 01WN501259
Ink Stone Trajectory 01WN501259

■ 产品信息 Products Information

常备规格 Regular Size (mm)	产品厚度 Product Thickness (mm)	纸箱规格 Carton Specifications (mm)	片数/箱 Pieces/Carton (pieces)	平方米/箱 Square Meters/Carton (m ²)	重量/箱 Weight/Carton (kg)	木托规格 Pallet Size (mm)	木箱/托 Crates/Pallet (crt.s.)	片数/箱 Pieces/Pallet (pieces)	平米/托 Square Meters/Pallet (m ²)	重量/托 Weight/pallet (kg)
1200×600	3.41	1210×610×450	16	11.52	37	1250×650×1020	13	/	149.76	479
2400×600	2.52	/	/	/	/	2450×710×510	/	100	144	645

■ 应用提示 Using Tips

柔性石材厚薄不均匀，宜采用配套的粘贴剂粘贴
密缝铺贴，宜采用配套的填缝剂填缝
建议横向铺贴

The flexible stone has uneven thickness, it is advisable to use a matching adhesive for sticking, and for close-seamed paving, it is advisable to use a matching grout for grouting, and it is recommended to pave horizontally.



流水石系列

FLOWSTONE SERIES

它是时间的见证者
是岁月的雕刻师
它静静地躺在溪流之畔
任由清澈的水流在它的表面轻轻滑过
留下一道道细腻的纹理
它是大自然的杰作
是岁月的礼赞

A Silent Testament to Time's Carving Hand
Resting quietly by the stream's edge,
it endures as the clear waters trace gentle
lines upon its surface, crafting a masterpiece of nature
and a celebration of the years.

FLOWSTONE SERIES

匠心独运 雕刻时光之美

Mindfully Crafted
Carving the Beauty of Time

▪ 常备规格 Regular Size
1200×600mm

▪ Not Limited The Following Colors
不限于以下颜色



红棕石澜 LS1001
Common Brown Stone Ripples LS1001

▪ 设计师灵感 Design Concept

产品的设计理念源自自然界中流水侵蚀岩石后形成的多彩层次，以及苔叶带痕的层叠形状，创造出一种动态而有序的空间感。土色、棕色与土红色的混搭，模仿了大地的色彩，给人以温暖和包容的感觉。

The design concept of the product is inspired by the colorful layers formed by the erosion of rocks by water in nature, as well as the layered shapes akin to vegetation blends, creating a sense of dynamic yet orderly space. The mix of earthy tones, browns, and terracotta reds mimics the colors of the earth, giving a feeling of warmth and inclusiveness.



米澜涟漪 LS5001Z
Single Rippled Flowing Beige LS5001Z

▪ 常备规格 Regular Size
1200×600mm

▪ Not Limited The Following Colors
不限于以下颜色



墨棕叠澜 01WF501538
Ink Brown Stacked Ripples 01WF501538



墨石层澜 LS3002
Ink Stone Layered Ripples LS3002

▪ 产品信息 Products Information

常备规格 Regular Size (mm)	产品厚度 Product Thickness (mm)	纸箱规格 Carton Specifications (mm)	片数/箱 Pieces/Carton (pieces)	平方数/箱 Square Meters/Carton (m ²)	重量/箱 Weight/Carton (kg)	木托规格 Pallet Size (mm)	木箱/托 Crates/Pallet (crt.s)	平米/托 Square Meters/Pallet (m ²)	重量/托 Weight/pallet (kg)
1200×600	10.5	1210×675×450	6	4.32	34	1250×650×1020	13	56.16	442

▪ 应用提示 Using Tips

柔性石材厚薄不均匀，宜采用配套的粘剂粘贴
密缝铺贴，宜采用配套的填缝剂填缝
建议横向铺贴

The flexible stone has uneven thickness, it is advisable to use a matching adhesive for sticking, and for close-seamed paving, it is advisable to use a matching grout for grouting, and it is recommended to pave horizontally.



布纹系列

LINEN FINISH SERIES

生活可以简单而不失优雅
可以朴素而不失精致
它的纹理，像是岁月的涟漪
在平静的湖面上轻轻荡漾
让人在忙碌的生活中
感受到一种宁静的力量

Life: A Harmonious Blend of Simplicity and Elegance
Life can be a canvas of simplicity that never loses its touch of
sophistication; it can be a tapestry of unadorned beauty that never
fails to be delicate. Its textures mirror the gentle ripples of time,
playing softly on the surface of life's quiet lake, offering a serene
strength in the whirl of our daily race.

LINEN FINISH SERIES

为生活织就一份简约而高级的格调

Weaving a simple yet sophisticated style into life

L I N E N F I N I S H S E R I E S



林间棕织 BW1001
Forest Brown Weave BW1001

1200*600mm

- 常备规格 Regular Size
1200×600mm / 2400×600mm / 3000×600mm

- Not Limited The Following Colors
不限于以下颜色



棕林山影 BW1005
Brown Forest Mountain Shadow BW1005

设计师说 Design Concept

丛林中由下往上眺望山头的景色，将这种自然景观的层次和深远感融入设计。麻布纹理与棕白色调的结合，模仿自然中的丛林和山色，创造出一种宁静而深远的空间感。

Gazing upwards from the jungle floor to the mountain peaks, the design integrates the layers and depth of this natural landscape. The combination of linen textures and beige tones mimics the jungle and mountain colors in nature, creating a tranquil and profound sense of space.

- 常备规格 Regular Size
1200×600mm / 2400×600mm / 3000×600mm

- Not Limited The Following Colors
不限于以下颜色



林间棕织 BW1001
Forest Brown Weave BW1001



米黄石脉 BW1002
Beige Yellow Stone Vein BW1002

产品信息 Products Information

常备规格 Regular Size (mm)	产品厚度 Product Thickness (mm)	纸箱规格 Carton Specifications (mm)	片数/箱 Pieces/Carton (pieces)	平方数/箱 Square Meters/Carton (m ²)	重量/箱 Weight/Carton (kg)	木托规格 Pallet Size (mm)	木箱/托 Crates/Pallet (crts)	片数/箱 Pieces/Pallet (pieces)	平米/托 Square Meters/Pallet (m ²)	重量/托 Weight/pallet (kg)
1200×600	3.7	1210×610×450	16	11.52	48	1250×650×1020	13	/	149.76	624
2400×600	2.7	/	/	/	/	2450×710×510	/	100	144	650
3000×600	2.7	/	/	/	/	3070×710×510	/	100	180	812.5

应用提示 Using Tips

柔性石材厚薄不均匀，宜采用配套的粘贴剂粘贴
密缝铺贴，宜采用配套的填缝剂填缝
建议横向铺贴

The flexible stone has uneven thickness, it is advisable to use a matching adhesive for sticking, and for close-seamed paving, it is advisable to use a matching grout for grouting, and it is recommended to pave horizontally.

9. PART

英安岩系列

DACITE SERIES

它是火山的低语

是大地深处
的热情与冷静的结晶
在炽热的熔岩与冰冷的大气相遇的瞬间
它诞生了

带着火与冰的双重性格

它的形成，是大自然最壮观的表演之一
是地球内部力量的直接体现

Andesite: A Poetic Birth from the Earth's Volcanic Soul
Born from the whispers of the volcano and the chill of the
atmosphere, andesite carries the poetic essence of fire and ice. Its
creation is a narrative of nature's most magnificent performances,
an embodiment of the earth's profound strength.

DACITE SERIES

品质 细节之处彰显

Quality reflects elegant living



D A C I T E S E R I E S

紫米极简 01WQ601287

Purple Rice Minimal 01WQ601287

1200*600mm

■ 常备规格 Regular Size

1200*600mm / 2400*600mm

■ Not Limited The Following Colors

不限于以下颜色



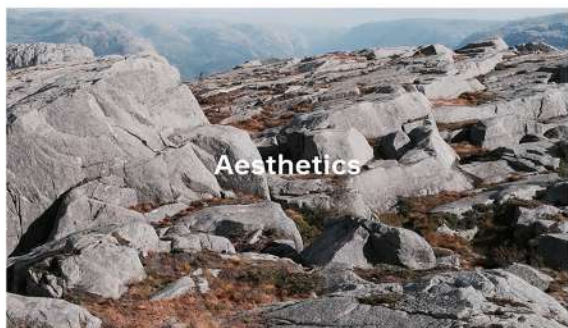
紫米极简 01WQ601287

Purple Rice Minimal 01WQ601287

■ 设计师说 Design Concept

当代极简艺术，通过简洁的线条和色块表达深邃的艺术理念。自然色彩的和谐搭配，米黄与浅紫的结合，营造出温馨而宁静的氛围。

Contemporary minimalist art expresses profound artistic concepts through simple lines and color blocks. The harmonious combination of natural colors, with the pairing of beige and light purple, creates a warm and tranquil atmosphere.



■ 常备规格 Regular Size

1200*600mm / 2400*600mm

■ Not Limited The Following Colors

不限于以下颜色



焰纹石语 PW1002

Flame Pattern Stone Narrative PW1002



云影蓝岩 PW1001

Cloud Shadow Blue Slate PW1001



砂岩米灰 01WQ601551

Sandstone Off-White 01WQ601551



英岩梦绘 01WQ201285

Ethereal Rock Dream Sketch 01WQ201285

■ 产品信息 Products Information

常备规格 Regular Size (mm)	产品厚度 Product Thickness (mm)	纸箱规格 Carton Specifications (mm)	片数/箱 Pieces/Carton (pieces)	平方数/箱 Square Meters/Carton (m ²)	重量/箱 Weight/Carton (kg)	木托规格 Pallet Size (mm)	木箱/托 Crates/Pallet (pts.)	片数/箱 Pieces/Pallet (pieces)	平米/托 Square Meters/Pallet (m ²)	重量/托 Weight/pallet (kg)
1200*600	3.6	1210*610*450	16	11.52	60.8	1250*650*1020	15	/	149.76	790.4
2400X600	2.81	/	/	/	/	2450*710*510	/	100	144	650

■ 应用提示 Using Tips

柔性石材厚薄不均匀，宜采用配套的粘附剂粘附
密缝铺贴，宜采用配套的填缝剂填缝
建议横向铺贴

The flexible stone has uneven thickness, it is advisable to use a matching adhesive for sticking, and for close-seamed paving, it is advisable to use a matching grout for grouting, and it is recommended to pave horizontally.

10. PART

页岩系列 SHALE SERIES

以其层叠的形态和丰富的内涵
成为连接过去与现在的桥梁
让我们在快节奏的生活中
能够感受大自然的宁静与和谐
仿佛置身于一个充满诗意的世界
无论是在室内的墙面、地面
还是在室外的建筑立面
软瓷的页岩效果都能够为空间
增添一份独特的艺术氛围

Nature's Silent Chronicler: A Bridge of Time
Its layered presence and intricate depth act as a bridge from the past to the present, a silent teller of stories that brings the peace and harmony of nature into our fast-paced world. The soft porcelain's shale effect, adorning both interior and exterior surfaces, imparts a singular artistic atmosphere to the space.



天空之美 诗意生活

The Beauty of the Sky Poetic Living

SHALE SERIES

SHALE SERIES

棕岩直纹 YY1002

Brown Rock Straight Grain YY1002

1200*600mm

样品编号: 棕岩直纹 YY1002, 雨迹石影 DS018

Model Number: Brown Rock Straight Grain YY1002, Rain Traces Stone Whispers DS018

SHALE SERIES



构筑不凡
尽显建筑艺术的深度与宽广

岩面木纹 YY1001

Rock Surface Wood Grain YY1001

1200*600mm

Building Extraordinary
Fully Displaying the Depth and
Breadth of Architectural Art

• 常规规格 Regular Size
1200*600mm

• Not Limited The Following Colors
不限于以下颜色



棕岩直纹 YY1002

Brown Rock Straight Grain YY1002

• 设计师说 Design Concept

木板切开的自然直纹纹理, 提供一种简洁而有序的视觉感受。
浅棕色的温暖与页岩的自然质感相结合, 创造出一种温馨而现代的氛围。
The natural straight grain texture after the wood board is cut provides a simple and orderly
visual experience. The warmth of light brown combined with the natural texture of page rock
creates a cozy and modern atmosphere.



岩面木纹 YY1001

Rock Surface Wood Grain YY1001



棕岩细语 YY1003

Brown Rock Whispe YY1003



古道石影 AH701218

Ancient Path Stone Whislow AH701218

• 产品信息 Products Information

常规规格 Regular Size (mm)	产品厚度 Product Thickness (mm)	纸箱规格 Carton Specification (mm)	片数/箱 Pieces/Carton (piece)	平方米/箱 Square Meters/Carton (m ²)	重量/箱 Weight/Carton (kg)	木托规格 Pallet Size (mm)	木箱/托 Cases/Pallets (sets)	平米/托 Square Meters/Pallet (m ²)	重量/托 Weight/Pallet (kg)
1200*600	29	1210*675*450	16	11.52	44.8	1250*650*1020	13	149.76	582.4

• 应用提示 Using Tips

柔性石材厚度不均匀, 宜采用配套的粘剂剂粘剂
空缝填补, 宜采用配套的填缝剂填缝
建议横向铺贴

The flexible stone has uneven thickness, it is advisable to
use a matching adhesive for sticking, and for stone-joint
peaving, it is advisable to use a matching grout for grouting,
and it is recommended to pave horizontally.